

VALPROATE:

PREGNANCY PREVENTION PROGRAMME AND REPRODUCTIVE RISKS IN MALES

(sodium valproate, valproic acid)



WARNING FOR WOMEN AND GIRLS

01

PATERNAL RISKS (MALE)

Neurodevelopmental Disorders (NDD)¹⁻⁴
Approx. **5 in 100** (5%)



Slightly increased NDD risk to children born to men taking valproate within 3 months prior to conception as compared to lamotrigine or levetiracetam⁵

Male Infertility



Low sperm count & motility¹

02

MATERNAL RISKS (FEMALE)

Birth Defects⁵



Spina Bfida



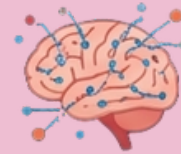
Hand Deformities



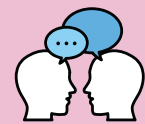
Cleft lip & palate

Approx. **11% risk of malformations**
(11 babies in every 100)

Neurodevelopmental Disorders (NDD)^{6,7}



Intellectual disability



Delayed talking

Approx. **30-40% risk of NDDs**
(30-40 babies in every 100)

STRICT PREGNANCY PREVENTION PROGRAM

03

CLINICAL RECOMMENDATIONS



DO NOT STOP VALPROATE ABRUPTLY without consulting a specialist, due to seizure risks



CONSULT DOCTOR if planning a family to discuss alternative treatments



USE HIGHLY EFFECTIVE CONTRACEPTION for both men and women

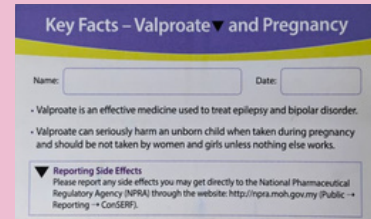


IMMEDIATELY CONTACT DOCTOR for urgent referral in case of suspected pregnancy

IMPORTANT ACTIONS FOR PHARMACY TEAM

Whenever you dispense valproate to any patient:

- Attach the Patient Card from the medication bin and give it to the patient when valproate is dispensed.
- Confirm with female patients that they have been made aware of the risks in pregnancy.

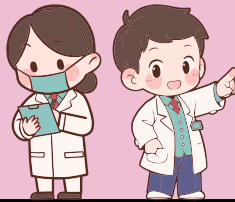
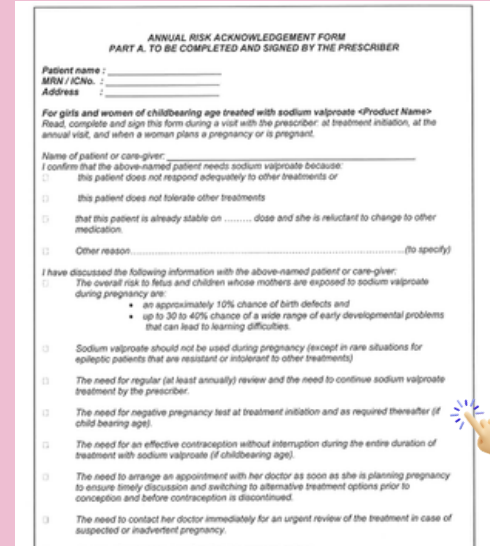


Sodium Valproate Patient Card

IMPORTANT ACTIONS FOR DOCTORS

Whenever you prescribe valproate to any patient:

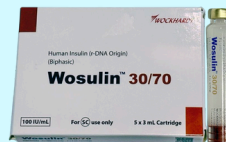
- Evaluate reproductive potential.
- Mandatory Annual Risk Acknowledgement Form and upload into patient's EMR.
- Counsel on paternal or maternal risks for respective patients.

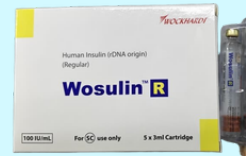
Annual Risk Acknowledgement Form

REMINDER Human Insulin Brand Switching

Switch from
Mixtard to
Wosulin 30/70



Switch from
Actrapid to
Wosulin R



Mixtard & Actrapid in the process
of phasing out worldwide.

Cartridges supply based on
EXCHANGE BASIS



- Penovva (insulin pen) will be supplied once for new case.
- No pen replacement, hence please educate patient to handle with care.

New Updates in HCTM Formulary App

- New dilution for Polymyxin B
- Renal dosing for Clexane inj.

Supply Alerts

- MMT syrup
 - Alternative: Tab Gelusil
- Morphine HCl 10mg/5ml soln (EX)
 - Alternative: Oramorph
- Human Normal Immunoglobulin Inj. 2.5 g/25 ml (IVIG 10%)
 - Only for approved indication, refer to formulary app
- Stock restrict to 1 month supply
 - Hypromellose eye drop
 - Tab clonazepam 0.5 mg
 - Tab Tenvir EM
 - Cap phenytoin 30 mg
 - Tab Requip 2mg & 4 mg PR
 - Tab Metformin 500 mg XR

Editor:

Nur Hafiza Saripin

Leanne Lew Hwui Ser

Michelle Tan Hwee Pheng

A publication of Drug Information Centre
druginfo@hctm.ukm.edu.my

To download HCTM Formulary App, click below



CEKAP, PANTAS, MESRA
ILMU, MUTU DAN BUDI

