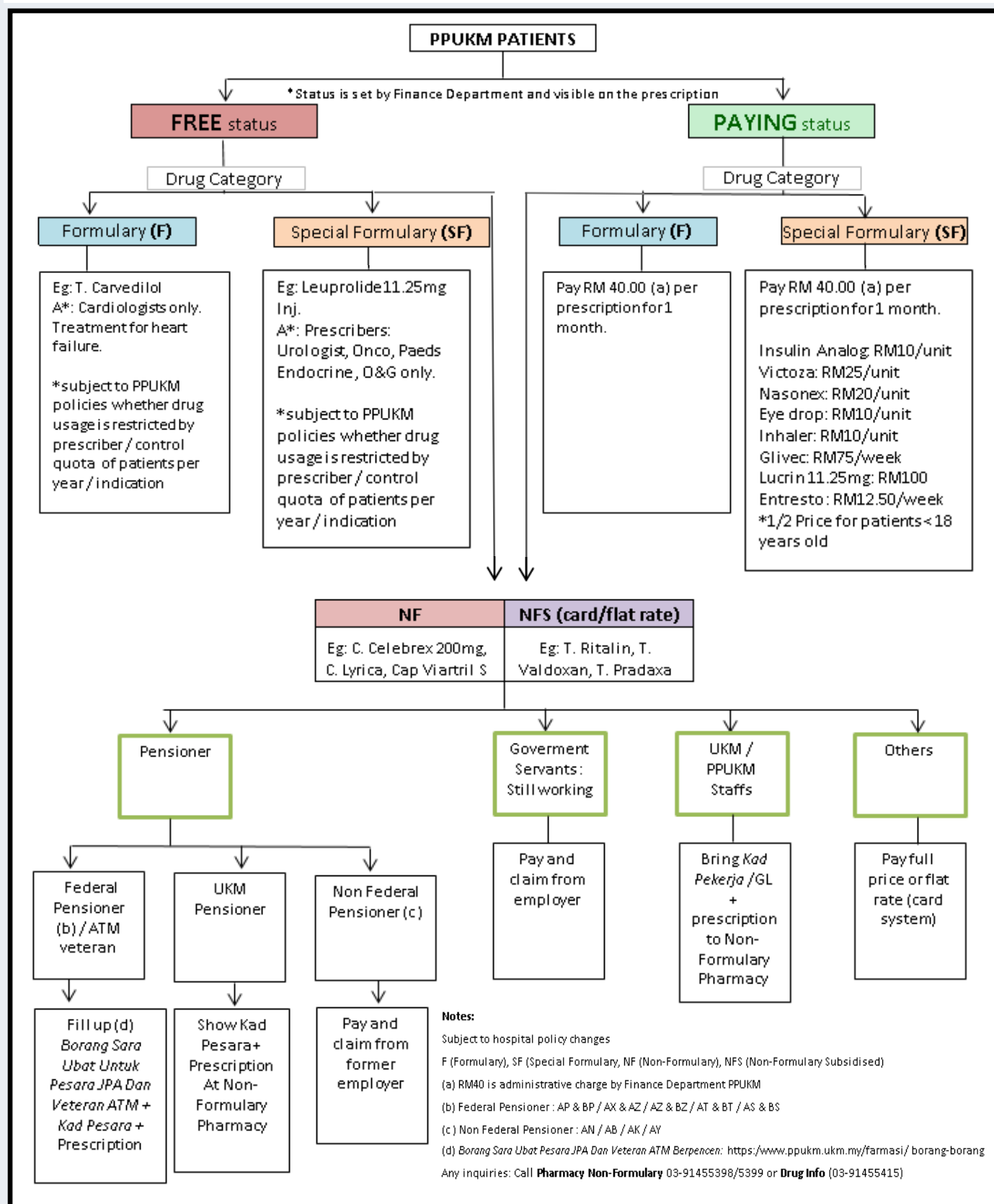


DRUG CATEGORIES IN PPUKM

PHARMACY BULLETIN

Pharmacy Department, HCTM, PPUKM



Drug Categories in PPUKM

The chart on the front page hopes to explain better the drug supply process based on the various drug categories. When a patient registers at the Clinic registration counter, they will be tagged as a 'FREE status' or 'PAYING status'. After the doctor's visit, patients will go to the Main Pharmacy or Satellites to collect the **F and SF** category drugs first, then head to NF Pharmacy to purchase the **NF or NFS** category drugs (if any).

Drug Category	F Formulary	SF Special Formulary	NF Non Formulary	NFS Non-Formulary
Policies	<p>Drugs and Therapeutics Committee</p> <p><u>A* drugs</u> : restricted by prescriber / by indication /by a set yearly budget/number of patient per year/ named patient basis</p> <p>Eg : Tab Januvia (Sitagliptin), Inj Vfend (Voriconazole)</p> <p><u>A drugs</u> : Restricted by certain group Prescriber</p> <p>Eg: Tab Atorvastatin,</p> <p><u>B drugs</u> : Anyone can prescribe</p> <p>Eg: Tab Loratadine, Tab Augmentin</p>		<p>NF are full price items. Only available if requested by Specialists to be sold in NF Pharmacy.</p> <p>Eg: Cap Lyrica (Pregabalin) , Cap Celebrex 200mg (Celecoxib), Tab Fosamax-D (Alendronate)</p> <p>NFS (flat rate) are subsidised for certain patients restricted by prescriber/ quota/card system.</p> <p>Eg : Flat rate charge for Tab Pradaxa /Tab Eliquis/Tab Xarelto are only for Neurologists and Cardiologists for Stroke Prevention in Atrial Fibrillation</p>	
Which Pharmacy to pick up from ?	Main Pharmacy/Satellite Pharmacies		NF Pharmacy	

FYDI : For Your Drug Information

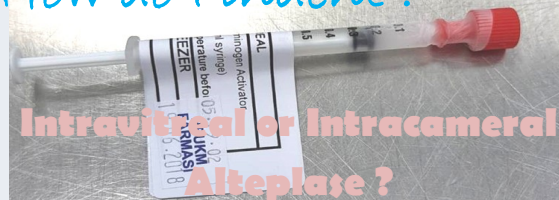
Neupogen® (Filgrastim) needs to be diluted with **Albumin?**

Filgrastim can be given via subcutaneous or intravenous. When given as intravenous, final concentration of 5mcg/mL-15mcg/mL MUST be diluted with D5%+ Albumin 0.2% (2mg/mL) to prevent adsorption. Neupogen is physically incompatible with Normal Saline.

Adsorption to infusion containers and equipment occurs to a greater extent with lower concentrations and with longer infusion tubing.

If Neupogen concentration is equal to or exceeding 15mcg/mL, no albumin needs to be added. (source: AHFS, Amgen PI, Trissels Handbook of Injectable Drugs)

How do I indent:



Alteplase has been approved for use by Ophthalmologists, and restricted to only 2 injections of 50mg Alteplase /year. Pharmacy Sterile Unit will syringe out into smaller unit doses of 0.25mg/ml and put it into a small syringe. It will be stored in a deep freezer of -30 celcius, stable for 6 months. Please indent Alteplase 0.25mg/ml eye drop preparation in the Pharmacy System 2 days before actual administration day to allow sufficient preparation time. Ensure defrosted one hour before administration.

Article contribution by Michelle

EDITORS :

IZYAN DIYANA IBRAHIM

izyandi@ppukm.ukm.edu.my

03-91455415

MICHELLE TAN HWEE PHENG

hptan@ppukm.ukm.edu.my

03-91455401

PDF version available in

<http://www.ppukm.ukm.my/farmasi/>



PPUKM Formulary is now available in

Google Play Store
("PPUKM Formulary" —
"Drug Formulary DIY- Formularies")

iOS Apple Store
("PPUKM Formulary")